




IMB X-RAY FACILITY EMERGENCY INFORMATION

Important Telephone Numbers and Weblinks

To call a seven digit number starting with 644-#### or 645-####, press 4- or 5- followed by the last four digits, respectively. To call any other number press 9- followed by the seven digit number. XRF phone is located in **KLB410A** (XRF Control Room).

EMERGENCY	911	URGENCY	311	Radiation Safety Office	644-8801
Soma's Office	644-6448	Soma's Cell	three three nine-two six nine nine	Soma's Home	two one nine-nine seven nine nine
Biosafety Office	644-5374	Chemical Safety Office	644-8800	Environmental Health & Safety	644-6895
Campus Police	644-1234	Building Repair	644-2424	FSU Info Hotline	644-4636

Facility Emergency Procedures 1 of 2

X-Ray Facility Shut-Off Procedure	X-Ray Generator Shut-Off Procedure	X-Ray Facility First Aid Kit
		
<p>During a Facility-wide emergency, the power to the entire Facility can be turned-off by pushing the red-colored round Emergency Stop button located on either side of the Facility. The fluorescent lights will NOT be affected.</p>	<p>During an emergency involving either one of the x-ray generators, the power to that generator alone can be turned-off by pushing the red-colored round Emergency button located in the middle of that x-ray generator.</p>	<p>First Aid Kit is located on the South wall of KLB410 the XRF Control Room. In case of a need please use it and let Soma know so that he can replace the missing items.</p>

Facility Emergency Procedures 2 of 2

Emergency Exit Main	Emergency Exit Back	Fire Extinguisher



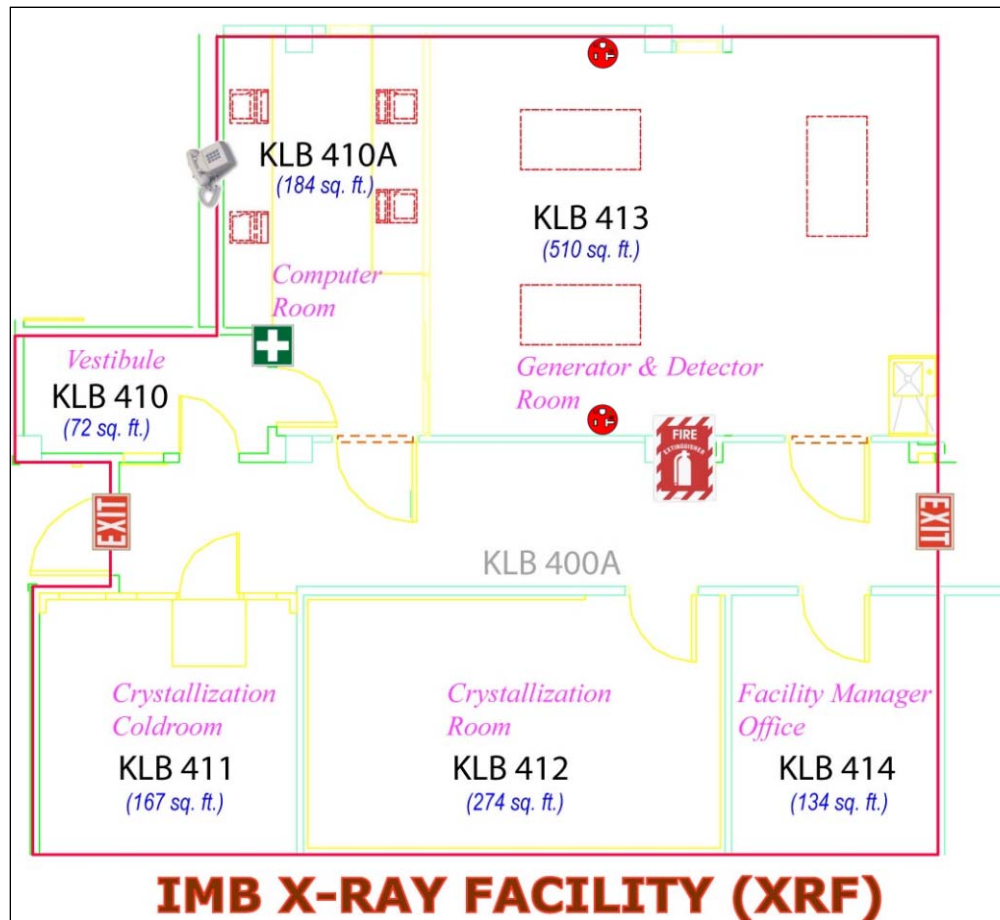
During an emergency users can evacuate the Facility using the main exit located at the South side of KLB400A.



During an emergency users can also evacuate the Facility using the alternate exit located at the North side of KLB400A.



Fire extinguisher is located outside the Facility in KLB400A (in front of KLB414). In case of a need please use it and let Soma know so that he can request for a replacement.



The Macromolecular X-Ray Crystallography Facility located on the East side of fourth floor of Kasha Laboratory in the Institute of Molecular Biophysics encompasses several rooms and occupies approximately 1200 ft². Detailed layout information about the rooms and amenities can be found by clicking the appropriate section on the image above.

| FSU | IMB | XRF | Soma | Last updated: 12/19/2006 10:51:53

© 2004-2006 Thayumanasamy Somasundaram

www.sb.fsu.edu/~xray/emergency-handout.html